



Data Transfer Device (DTD)

Specifications/Requirements:

Mechanical:

3 7/8" W x 5 3/4" L x 1 1/2" D

Environmental:

Environment: Store Indoors.

Do not get wet.

Temperature Tolerance: 32° F to 120° F (0° – 49°C)

Electrical:

Operating Voltage: 6V (Four AA Batteries)

Software Compatibility:

Hub Manager Professional Version 7.3.1 (or higher)

PC Connection:

USB Port (v1.1 or v2.0) Only

Description

Hand held DATA TRANSFER DEVICE for wireless IR [infrared] transfer of data to and retrieval of the logs from LS2 Series wireless access control locksets and prox.pad plus IR wireless software managed integrated access system. Data is saved to internal memory for transfer to a PC via USB connection. Powered by four AA batteries (included).

Software Compatibility

The DTD is compatible with Hub Manager Professional Version 7.3.1 (or higher). The included software CD supports the DTD and contains the required USB drivers. You can also download the latest version of software at www.ieib.com or update your existing software through iUpdate.

Note: No additional software is required to transfer data to the DTD.

Packing List

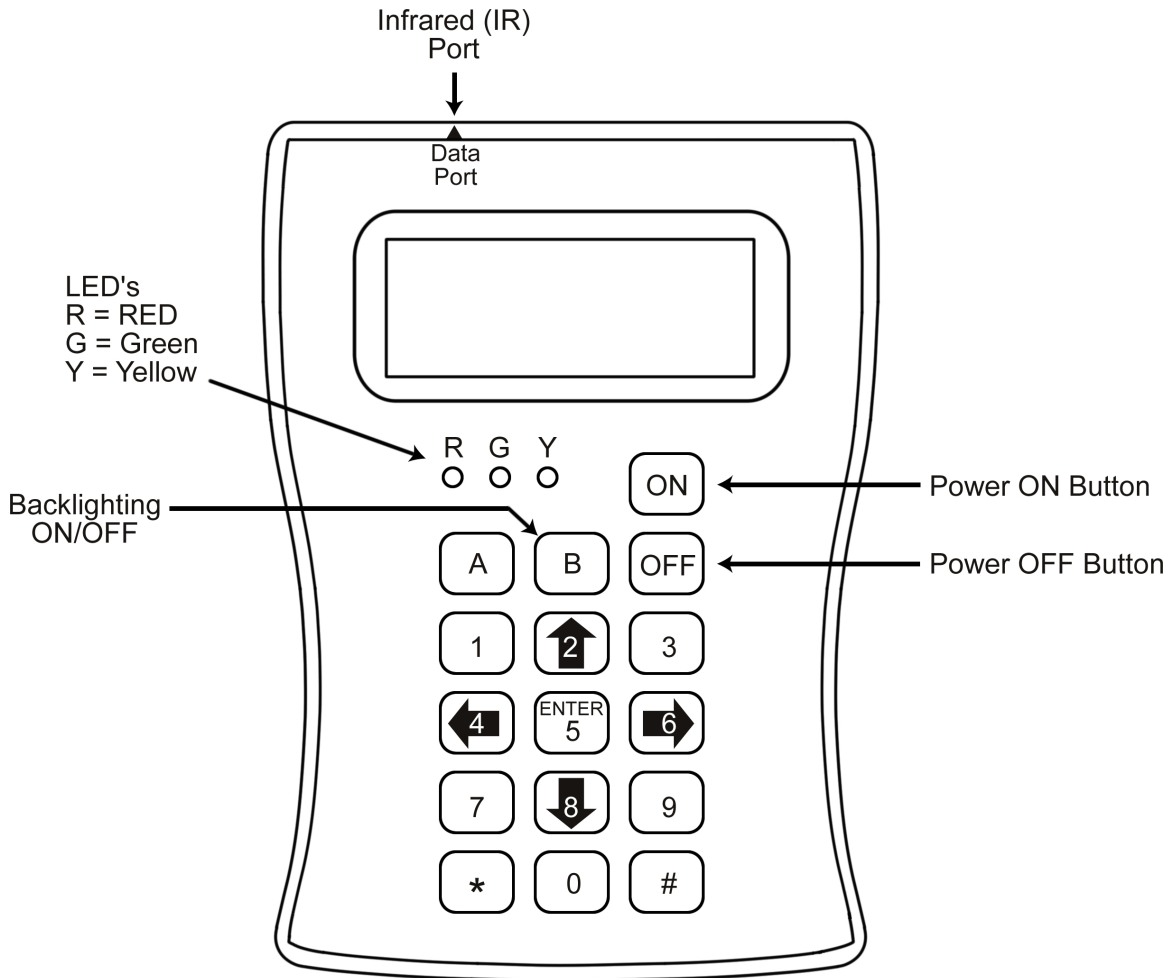
- (1) Data Transfer Device
- (1) DTD Operating Instructions
- (1) USB Cable
- (4) AA Batteries (already installed – see Battery Installation Section before use)
- (1) Hub Manager Professional Software CD

15.21 Information to User

Any changes or modifications not expressly approved by the party responsible for compliance could void the user's authority to operate the equipment.

DTD Diagram

Below is a diagram of the DTD. It indicates the location of the Power On/Off buttons, the backlighting button and the LEDs. These are explained in detail in later sections. The Infrared (IR) Port is located at the top of the unit above the display where it says “Data Port.” When transferring data to the door controller aim the IR Port on the DTD at the IR Port on the door controller.

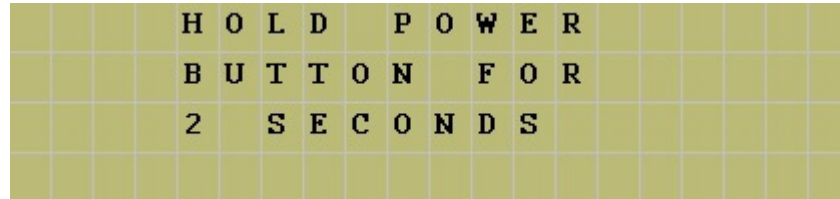


DTD Battery Installation

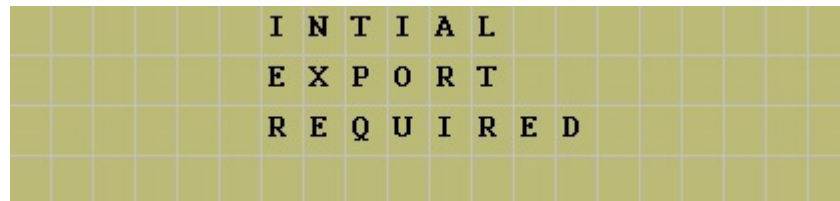
Prior to using the DTD, you must remove the battery cover, which is located on the rear of the unit, and remove the red paper tab. This tab is in place so the batteries are not connected during shipping. First, remove the screw in the bottom center and remove the cover. Then remove the red tab from the battery. Replace the cover and secure it with the screw.

DTD Power

To turn on power to the DTD press and hold the ON button. The message below is displayed for two seconds until the DTD powers up. **Note:** See the previous section regarding the batteries.



When the DTD is powered-up Main Start-Up screen is displayed as shown below. This message is displayed on power-up until you connect the DTD to your PC and export data to it from Hub Manager Professional. After exporting, this screen is replaced with the IEI splash screen.



To turn off the DTD press the OFF button shown in the diagram. The DTD has an automatic power-off feature. After 10 minutes of inactivity the DTD turns itself off automatically to save battery life.

Display Backlighting

The DTD is equipped with display backlighting. Simply press the B key to turn on backlighting. The backlighting remains on for 15 seconds after the last key press to save battery life. It turns on again after pressing a key. To turn off backlighting completely press the B key again.

LED Indicators

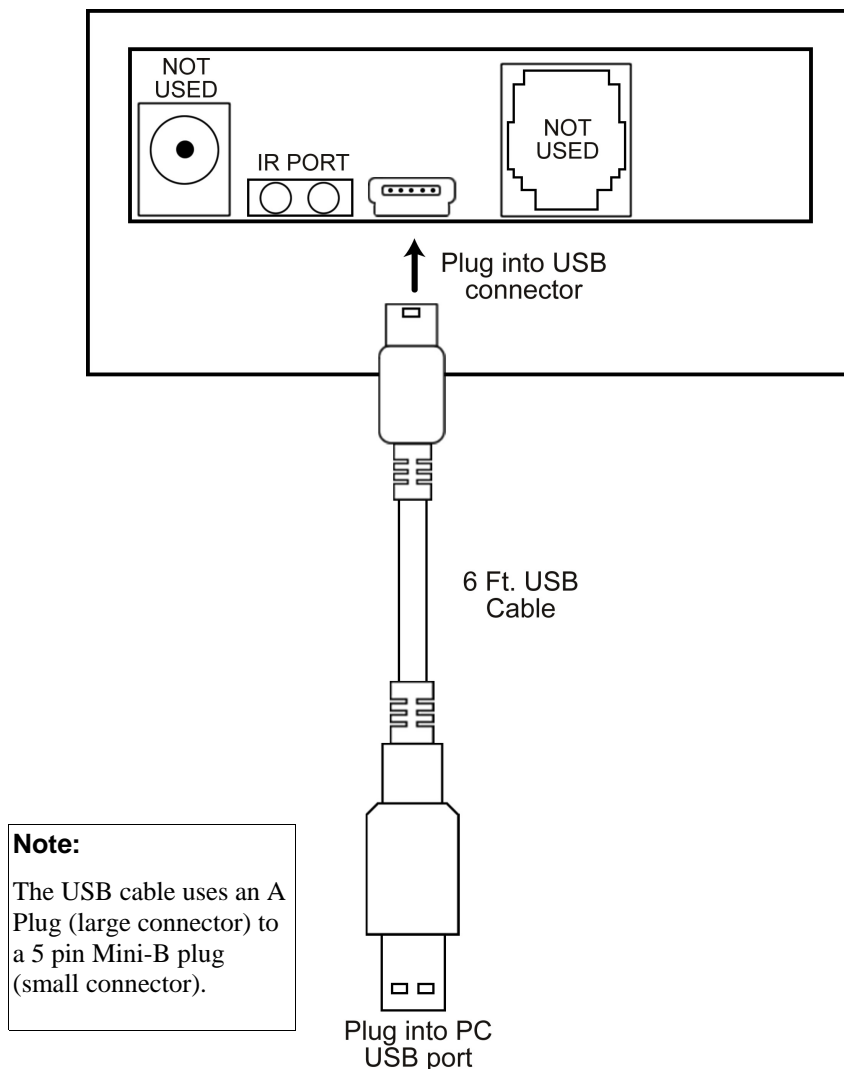
The DTD uses the green and red LED's to indicate when the device is communicating. When the DTD is successfully communicating to the door controller, the green LED lights. If at any point you lose communications, the red LED lights. This typically means you've moved the DTD out of door controller's IR field. You have 10 seconds to re-establish communications before the DTD times out.

Data Transfer Device vs. PDA Operation

The main difference between the Data Transfer Device and a PDA is the way data is transferred from the PC to the DTD. Unlike the PDA, which requires Palm Desktop software, HotSync Manager and IEI LSLink, the DTD does not require any additional software and interfaces directly with Hub Manager Professional. In Hub Manager Professional, the data is exported directly to the DTD. Please refer to the Hub Manager Professional documentation for further details.

Connecting the Data Transfer Device to a PC USB port

To connect the DTD to your PC USB port, first plug the small end of the 6-foot USB cable into USB connector on the top of the DTD. Then plug the large end of the 6-foot USB cable into your PC's USB port. The diagram below shows this connection.



Installing the USB Drivers

To use the DTD you must install the USB drivers on the PC. The DTD is plug and play, so when you plug it in, your PC should recognize the new hardware and launch the Found New Hardware Wizard as shown below. **Please note that this hardware wizard runs twice.** Follow the same steps both times.

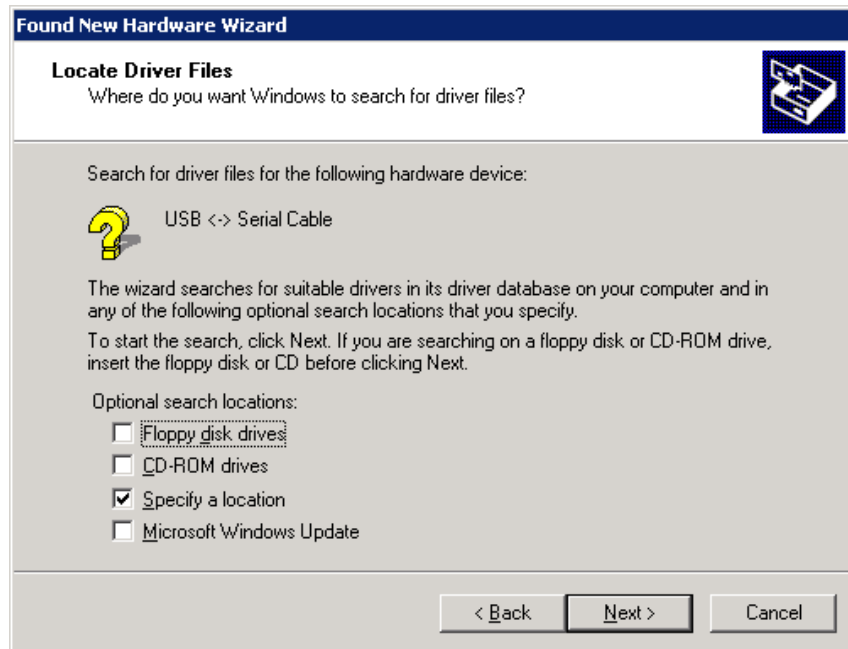


After clicking the Next button, choose the option that says “Search for a suitable driver for my device (recommended),” and click the Next button.



Data Transfer Device Operating Instructions

Now Windows asks you to specify the location to search for the USB drivers. Choose the “Specify a location” option and click Next.



Windows then prompts you to specify the driver location on your computer. Click the Browse button to search for the driver. For Windows XP and 2000 choose the following location:

C:\Program Files\IEI\HubManagerPro7\Program\Utilities\USB_Driver\FTDI_XP-2K-2003

Note: The drivers are placed on your computer when you install the PC software in the folder indicated above. They are also located on the Hub Manager Professional installation CD supplied with the DTD.



Determining the USB COM port number

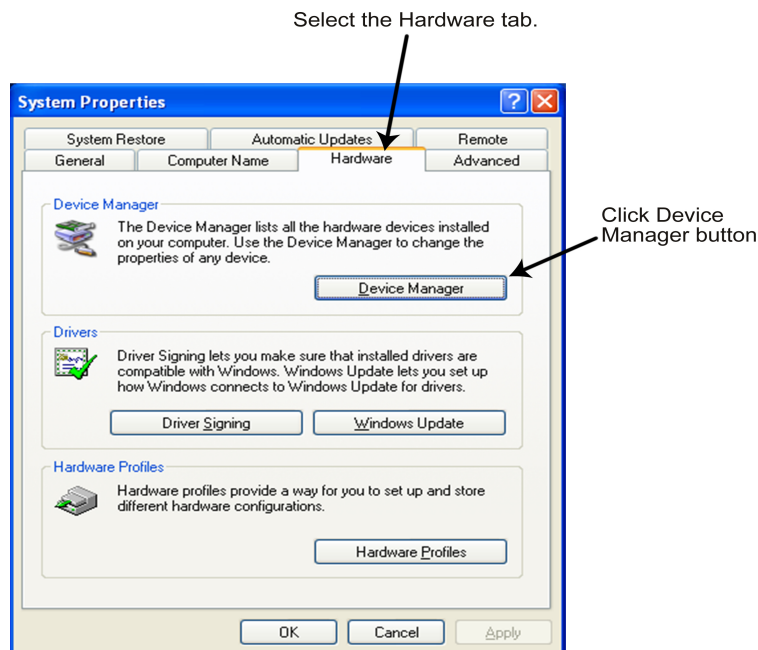
When you connect the Data Transfer Device to your computer's USB port, the PC automatically assigns it a COM port number. You must then select this COM port in the software to communicate to your DTD. You can either use the automatic search feature in Hub Manager Professional or follow the instructions below to determine the COM port number. **Note:** These instructions are for Windows XP. If you are using a different operating system please refer to the instructions for that operating system.

1. Right click on the My Computer icon on your desktop and select properties from the drop down list.



Note: If you do not have the My Computer icon on your desktop, you can access the System Properties by going to Control Panel. Click on the Windows Start Menu and choose Settings, then Control Panel. When the Control Panel menu opens, scroll down to System. Double-click on System to open. Follow the rest of the instructions in this section.

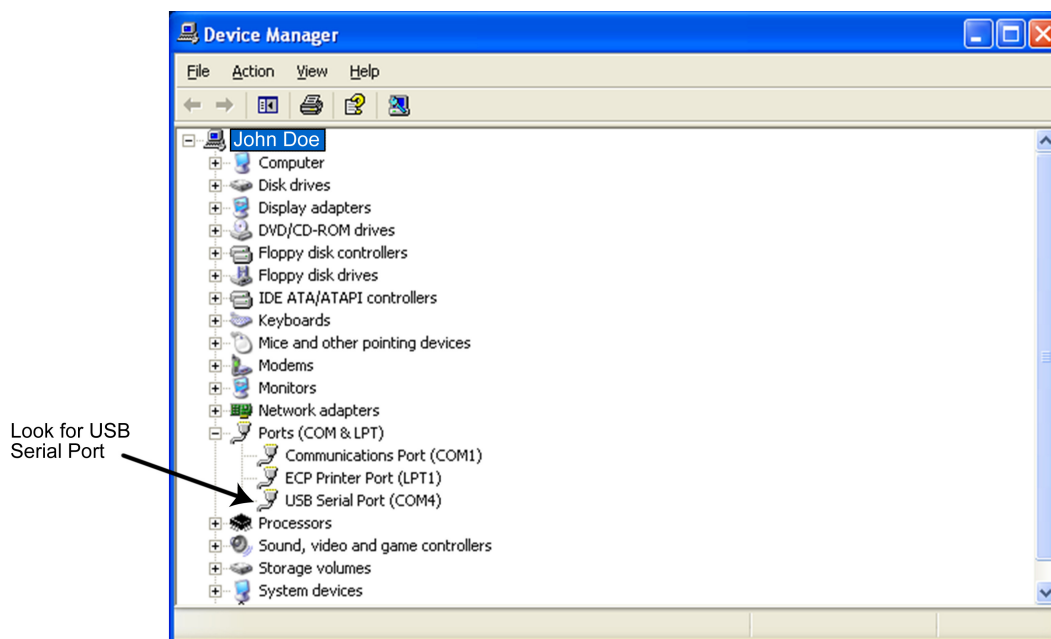
2. When the System Properties screen opens select the Hardware tab, then click on the Device Manager button.



Data Transfer Device Operating Instructions

- When the device manager list opens, expand Ports (COM & LPT) by clicking the + symbol. Under this is a list of the COM ports on your PC. Look for USB Serial Port (COMx) in the list. The COM port is shown to the right. The example below shows the DTD is assigned to COM4.

Note: If you are unsure of which device it is, unplug the USB cable and the screen will refresh. Take note of which devices are in the list. Then plug the cable back in and notice which device re-appears in the list.



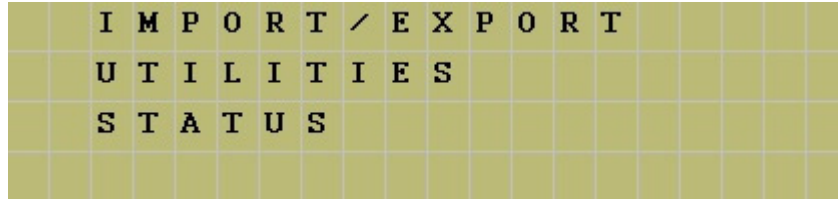
Important Note:

If you unplug the DTD from the USB port and plug it into a different physical port on the PC or on a USB Hub, the COM port number will remain the same.

DTD Menu System

When you first turn on power to the DTD the Main Start-Up screen is displayed. **To access the DTD menu system press the ENTER key, which is the number 5 key in the center.**

Next you are presented with three main sub-menu selections: IMPORT/EXPORT, UTILITIES and STATUS. The IMPORT/EXPORT menu is used to export data to the controller or import transaction logs. The UTILITIES menu contains options to retrieve information from the door controller, time and date options and communications options. The STATUS menu contains door information, as well as, DTD information. These menu options are described in more detail in later sections.

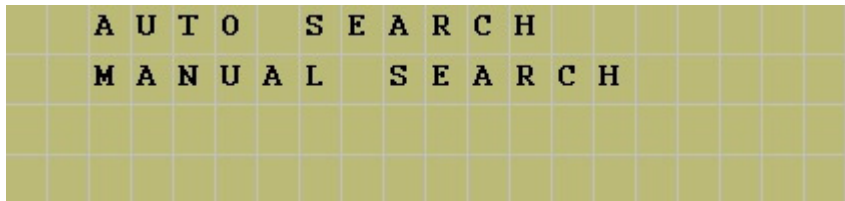


To navigate through the menu system, press the down arrow, which is the number 8 key in the lower center or the up arrow, which is the number 2 key in the upper center. The blinking cursor on the left of the DTD display moves up and down next to the various options. To select an option press the ENTER key. To move back to a previous menu press the left arrow, which is the number 4 key on the left center.

Note: If at any time you want to return to the Main Start-Up screen press the * key in the lower left corner. Also pressing the left arrow brings you back to the previous menu.

Import/Export Menu

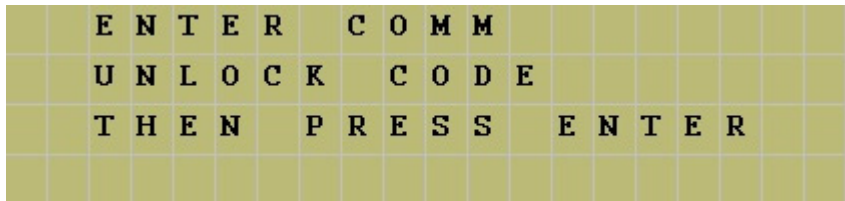
The IMPORT/EXPORT menu is used to export data to the door controller and import transactions from it. There are two options: AUTO SEARCH and MANUAL SEARCH. These options are described below.



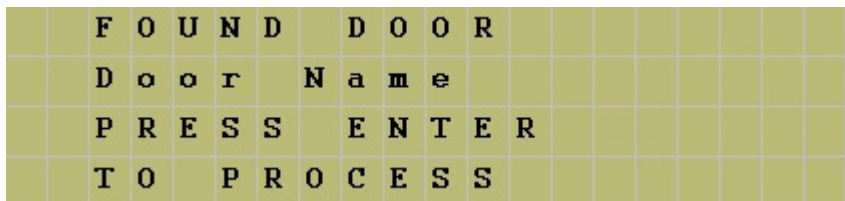
Exporting using the AUTO SEARCH Menu

The AUTO SEARCH option is used to communicate to a door automatically. When communications begin the DTD reads the serial number out of the door controller and compares that to the serial numbers in the door files stored on the DTD. When it finds the matching door file, the import/export begins. **Note:** If a matching file is not found, the DTD prompts you with a warning message. When you press enter, you are sent to manual search mode, where you select the door from a list.

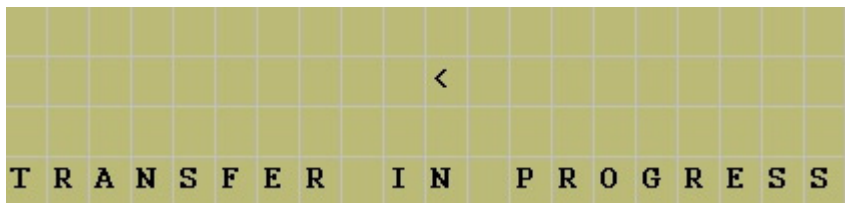
First, enter your Comm Unlock code on your door controller, then press the enter button on the DTD to select **AUTO SEARCH**. If communications are not established you are prompted with the following message (either you entered the wrong code or are not aligned properly). Press enter to continue.



If a matching door file is found, the following screen appears indicating the name of the matching door it found. Press enter continue the import/export process.



When the transfer begins the following screen appears and the green LED turns on. If at any point you lose communications with the door controller, the red LED turns on. You have 10 seconds to move the DTD back into range.



When the data transfer is complete the following message appears. Press the left arrow to exit to the menu.

		E	x	p	o	r	t	/	I	m	p	o	r	t			
		C	o	m	p	l	e	t	e	d							
	<	:	E	X	I	T		T	O		M	E	N	U			

If a matching door file is not found, the following message appears. When you press enter you are brought to the manual search screen, which allows to choose a door from the list. Please refer to the following section discussing the manual search menu.

W	A	R	N	I	N	G	,		D	E	V	I	C	E		
N	O	T		R	E	C	O	G	N	I	Z	E	D			
P	R	E	S	S		E	N	T	E	R						
T	O		C	O	N	T	I	N	U	E						

Exporting using the MANUAL SEARCH Menu

The MANUAL SEARCH option is used to communicate to a door controller that you haven't previously connected to. When you select this option, the search screen is displayed. To navigate through the list of doors using the up and down arrows.

M	a	n	u	a	l		D	o	o	r		S	e	a	r	c	h
U	p	/	D	o	w	n	:		T	o		S	e	a	r	c	h
E	n	t	e	r	:		S	e	l	e	c	t		D	o	o	r

The doors are displayed as shown below. The site name is on the first line and the door name is on the second line.

		D	o	o	r		N	a	m	e							
		S	i	t	e		N	a	m	e							
U	p	/	D	o	w	n	:		T	o		S	e	a	r	c	h
E	n	t	e	r	:		S	e	l	e	c	t		D	o	o	r

Data Transfer Device Operating Instructions

When you reach the door you are looking for press the enter key. If communications are not already established you are prompted with the following message (either you entered the wrong code or are not aligned properly). Press enter to continue.

[illegible]

Now enter your Comm. Unlock code on your door controller and aim your DTD at the IR port on the door controller and press the ENTER key.

If the serial number in the export file you are trying to send does not match the serial number in the controller, you are prompted with a warning message. This message means one of two things: either the serial number in the door file you chose does not match the serial number of the door controller or this is the first time you've attempted to communicate with the door.

W	A	R	N	I	N	G	,	S	E	R	I	A	L			
N	U	M	B	E	R		D	O	E	S		N	O	T		
M	A	T	C	H		D	O	O	R	.		P	R	E	S	S
E	N	T	E	R		T	O		C	O	N	T	I	N	U	E

If you wish to proceed, press the enter key to continue. When the transfer begins the following screen appears and the green LED turns on. If at any point you lose communications with the door controller, the red LED turns on. You have 10 seconds to move the DTD back into range.

TRANSFER IN PROGRESS

When data transfer is complete the message below appears. Press the up or down arrows to move through the door list.

	E	x	p	o	r	t	/	I	m	p	o	r	t						
	C	o	m	p	l	e	t	e	d										
	^		P	r	e	v	i	o	u	s		D	o	o	r				
	v		N	e	x	t		D	o	o	r								

SET DOOR CLOCK

Hub Manager Professional has an option to automatically set the time and date in the controller automatically when you export. You also have the option to manually set the time and date in the door controller using this menu option. First, enter your Comm. Unlock code on the door controller. Next aim your DTD at the IR port on the controller and press the ENTER key. If successful, the message below is displayed on the DTD screen.

D	O	O	R		T	I	M	E		S	E	T						
1	1	:	3	8														
0	7	/	1	6	/	0	7											

OPTIONS

The options menu allows you to set the DTD to the following three options: EXPORT ONLY, IMPORT ONLY or IMPORT & EXPORT. If you only wish to export data to the controller, choose EXPORT ONLY by pressing the enter key with the cursor next to that option. When set, the DTD displays a confirmation message. Press the left arrow to exit the message and return to the menu. The “=” symbol indicates which options is currently set. Select the IMPORT ONLY option when you only want to import transaction log data from the door controller without exporting any data to it. The IMPORT & EXPORT options performs both operations.

	A	U	T	O		O	P	T	I	O	N	S						
	E	X	P	O	R	T	_	O	N	L	Y							
	I	M	P	O	R	T	_	O	N	L	Y							
=	I	M	P	O	R	T		&		E	X	P	O	R	T			

Security Risk Warning (W01)

When the DTD attempts to communicate to the door controller during the import/export process, it first asks the controller if program mode was entered. If program mode was entered manually on the controller, the following warning is displayed. This warning means that someone may have programmed data into the controller that doesn't match the PC software database. When this message is displayed you can either ignore it for the time being and continue with your import/export or you can press the back arrow to cancel the operation. To correct the situation return to the PC and choose the full export options. Please refer to the PC software documentation for complete details about performing this action.

S	e	c	u	r	i	t	y		R	i	s	k		(W	0	1)	
P	r	o	g	.		M	o	d	e		D	e	t	e	c	t	e	d	
C	o	n	t	i	n	u	e	:		E	n	t	e	r					
E	x	i	t	:		P	r	e	s	s		B	a	c	k				

Updating the DTD Firmware

The DTD contains a feature that allows you to update the DTD firmware in the field. As new features and enhancements are available, the new firmware is downloaded to your PC when you run iUpdate through Hub Manager Professional. Please refer to the PC software documentation for complete details on updating the firmware. If you choose to update the DTD firmware, remember to visit IEI's website at www.ieib.com to download the latest revision of the DTD Operating Instructions.



International Electronics, Inc.

427 Turnpike St.

Canton, MA 02021 U.S.A.

Phone: 800-343-9502, 781-821-5566

Fax: 781-821-4443

Website: www.ieib.com